



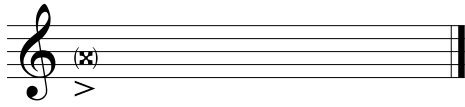
**Julian Ward**

***The Room is Dark and Silent***

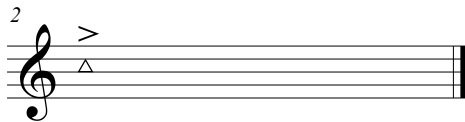
**For String Quartet**

# The Room is Dark and Silent

## Key



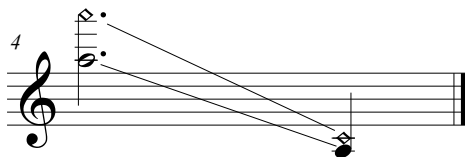
This is an overpressed note wherein a lot of pressure is put into the bow creating a distorted sound while maintaining a sense of pitch.



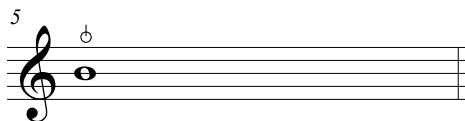
This is a scratch tone wherein the strings are muted with the left hand and there is very little pitch left in the sound.



This is tapping on the body of the instrument with the tip of the fingers. The cross indicates values of a quarter note and shorter and the rectangle indicates values a half note and greater.



This is the seagull effect. Keep the space of the fingers equal distance while moving along the finger board.



This is used to indicate a Bartok pizz.

# The Room is Dark and Silent

Julian Ward

## The Room is Dark and Silent ♩ = 60

Violin I

Violin II

Viola

Cello

*pp*

sul pont. (wispy)

5

rit. ----- a tempo (♩ = ♩)

Vln. I

Vln. II

Vla.

Vc.

*p* *pp*

*p* *pp* *p* *pp* *p* *pp*

The Room is Dark and Silent  
(Score)

*8va*-----

*sul pont. (wispy)*

10

Vln. I

*pp*

*p* *pp* *p* *pp*

Vln. II

*pp*

*p* *pp* *p*

Vla.

*p*

Vc.

*p > pp* *p > pp*

*(8va)*-----

14

Vln. I

*pp*

*p* *mp*

Vln. II

*pp*

*p* *mp*

Vla.

*pp* *p*

Vc.

*p* *mp > p* *mp > p*